

## Manatee High School Home Games

We are excited for another year of Hurricane Athletics!

Our games are going to look a little different this season as we are under construction on our stadium bleachers, but you can count on our Cane Pride being strong! Throughout all games, social distancing and facemasks are encouraged. Below are our game policies for the 2021-2022 season.

### **Ticket Procedures**

**No cash sales at the ticket gate.** This will be district wide.

General admission football tickets are \$7 and must be purchased online at [GoFan](#). Tickets for that week's game will go on sale on Mondays at 9am. Capacity has been reduced minimally due to construction. All other sports are \$5 and will also be purchased online.

View this link for guidance on how to use GoFan. [GoFan tutorial](#)

### **Football Parking**

Please see the aerial image for additional information on where to park, enter and exit the stadium.

Please exit the stadium the same route to maintain social distancing.

Parking is \$5 per car and fans are encouraged to bring exact change.

*Home fans* will park in the student parking lot off of 32<sup>nd</sup> St. W. and walk down Gary Theiler Way to the main ticket entrance.

*Visiting fans* will park in the teacher's parking lot off of 35<sup>th</sup> St. W. They will walk down the sidewalk on 9<sup>th</sup> Ave. W. to the corner gate at the stadium, where all visiting team fans will enter through.

*Touchdown Club members* will park in the bus loop on the south side of the North Gym.

Handicap Parking will be available behind the stadium.

### **Fans**

District-wide, fans are encouraged to practice social distancing and wear facemasks. Standing on the fence or loitering in common areas will not be permitted.

Manatee "M" will be on the ground to help fans ensure social distancing while in areas that requires lines (gates, concessions, etc.).

District-wide, water fountains will not be available.

Fans are encouraged to bring their own hand sanitizer to games. Hand sanitizing stations will be available.

### **Sidelines**

Only essential personnel will be allowed on sidelines. That is limited to anyone who is needed to run a game, which includes, coaches, trainers, chain crew, ball boys, assigned media, and administration.

Coaches and all other sideline personnel are encouraged to wear facemasks. Football sideline has been extended so the football team can socially distance on the sidelines.

### **Concessions**

Concessions will be available behind the west end-zone only. Vendors will also be on site for your enjoyment. Standing on the M's is encouraged to promote social distancing while waiting for your order.

### **Football Half-time**

Half-Time will be 15 minutes.

### **Post-Game**

No one will be allowed on the field post-game. Parents and fans need to exit the stadium immediately following the conclusion of the game. Football athletes will be released from the locker room on Gary Theiler Way.

### **Press Box / Media**

Only essential personnel will only be allowed in the press box.

Press personnel will be restricted to the field, from the 10-yard line to the back of the endzone. They may not switch sides while students are in the pathway.

### **Visiting team**

The visiting team will use the locker room directly behind the west end zone. Visitors are encouraged to tape any athletes before arrival. A trainer will be on-site for emergency purposes only. Visitors should bring their own coolers and water will be available on site.

### **Officials**

Officials will dress in the boy's locker room in Building 32.

*Hurricanes*

Fan parking and entrance/exit map



### Game day field layout



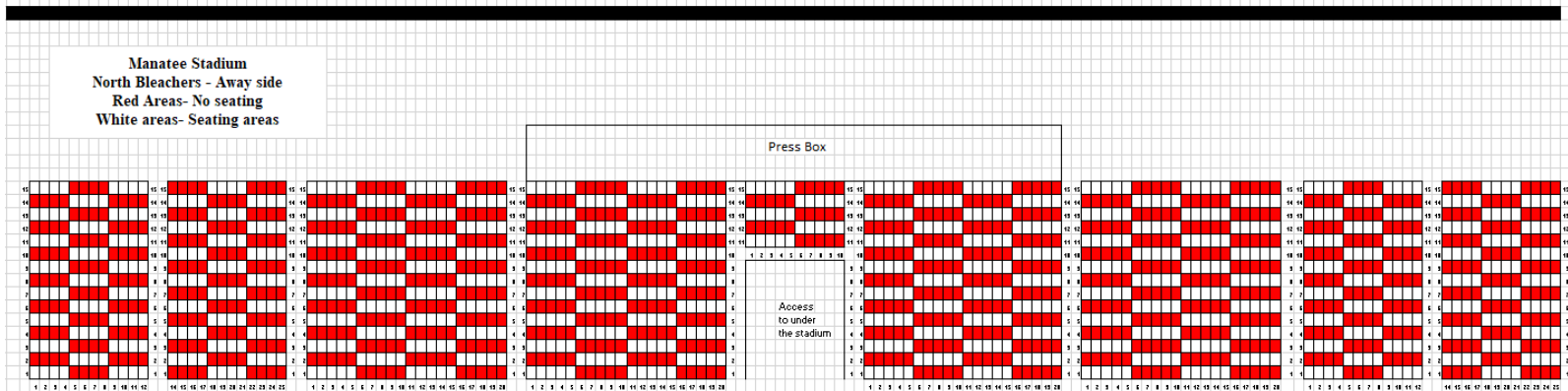
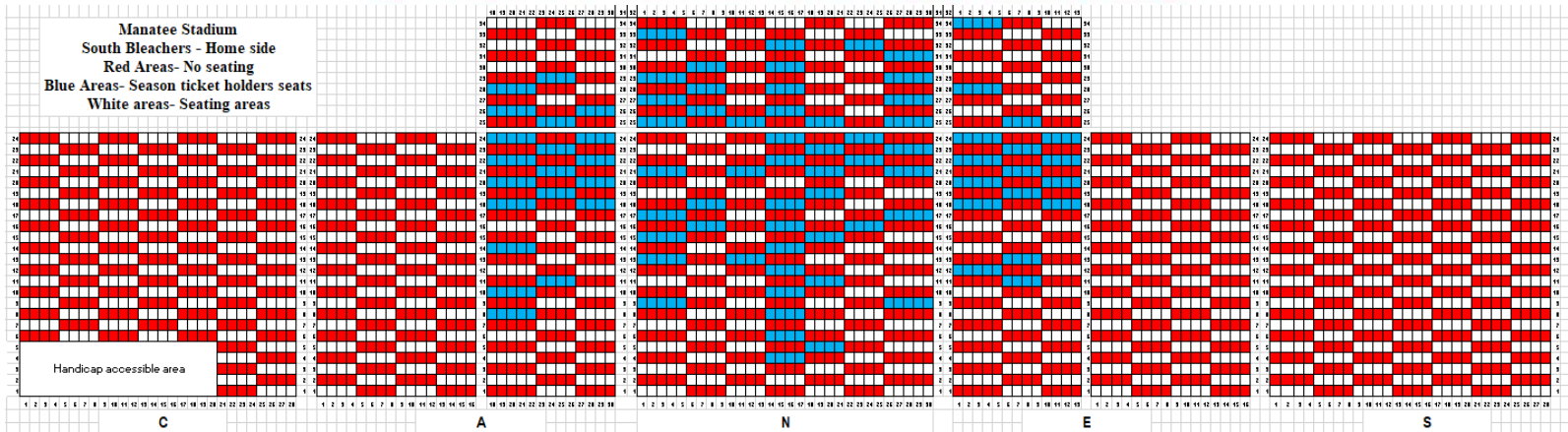
*Durrmedias*

# Manatee Stadium seating- Home and away sides

Red areas- No seating

Blue areas- Reserved tickets

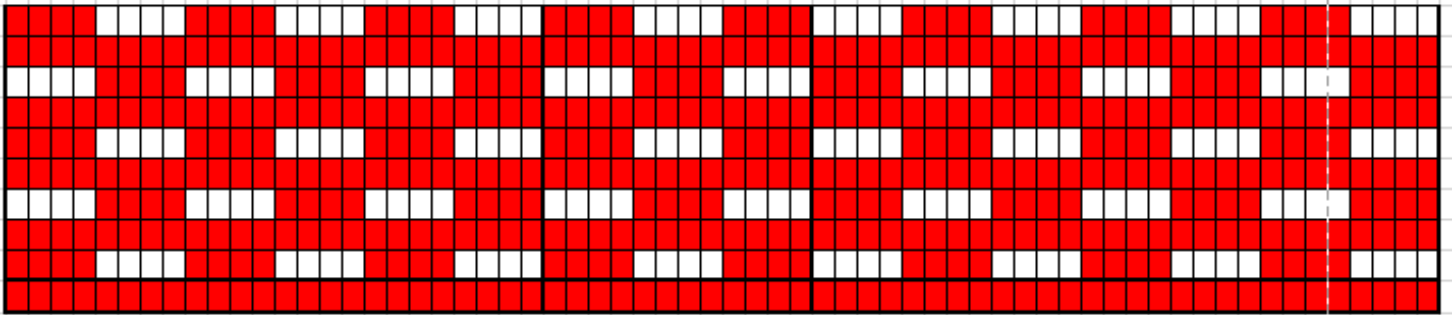
White areas- Available seating



*Hurricanes*

**Manatee North gym seating**

**Manatee North Gym  
East Bleachers - Home side  
Red Areas- No seating  
White areas- Seating areas**



**Manatee North Gym  
West Bleachers - Away side  
Red Areas- No seating  
White areas- Seating areas**

