

Manatee High School Home Games

We are excited to be able to play football this year!

Our games are going to look a little different this season, but you can count on our Cane Pride being strong! Throughout all games, please maintain social distancing and wear facemasks. Below are our game policies for the 2020-2021 season.

Ticket Procedures

No tickets will be sold at the gate. This will be district wide.

General admission football tickets are \$6 and must be purchased online at, [Ticket Spicket- click here to go to webpage](#). Tickets for that week's game will go on sale on Mondays at 9am. There will be a limited capacity, so it is possible games will sell out. All other sports are \$5 and will also be purchased online. View this link for guidance on how to use Ticket Spicket- [Click here for video on how to purchase tickets](#)

Football Parking

Please see the aerial image for additional information on where to park, enter and exit the stadium. Please exit the stadium the same route to maintain social distancing.

Parking is \$5 per car and fans are encouraged to bring exact change. Parking attendants will wear masks and gloves at all times.

Home fans will park in the student parking lot off of 32nd St. W. and walk down Gary Theiler Way to the main ticket entrance.

Visiting fans will park in the teacher's parking lot off of 35th St. W. They will walk down the sidewalk on 9th Ave. W. to the corner gate at the stadium, where all visiting team fans will enter through.

Season ticket holders will park on the back practice field and enter through the booster gate.

Fans

District-wide, fans must wear a mask that covers the mouth and nose at all times while on campus. Standing on the fence or loitering in common areas will not be permitted.

Manatee "M" will be on the ground to help fans ensure social distancing while in areas that requires lines (gates, concessions, etc.).

Fans may only sit in appropriate sections. **Do not sit in red taped off sections.** Blue taped sections are for season ticket holders. Areas with no tape are open for general admission fans to sit.

District-wide, water fountains will not be available.

Fans are encouraged to bring their own hand sanitizer to games. Hand sanitizing stations will be available.

District-wide, no outside vendors/food trucks will be permitted, and no merchandise sales (boosters, PTSA, etc.) will be at the games.

Sidelines

District policy is only essential personnel will be allowed on sidelines this year. That is limited to anyone who is needed to run a game, which includes, coaches, trainers, chain crew, ball boys, assigned media, and administration.

District-wide, athletes must wear facemasks when not in the game. Coaches and all other sideline personnel must wear facemasks at all times. Football sideline has been extended so the football team can socially distance on the sidelines.

Cheer/Band/Sugar Canes/Color Guard

District-wide, cheer and band will be at home football games only. Visiting teams will not be allowed to bring band or cheer to our home games.

To maximum student safety and seating capacity, we have shifted around our game day layout. Please see the aerial image for more detailed information.

Students must be 6 feet apart while performing and cheer must wear masks when stunting.

Concessions

District-wide, only pre-packaged food will be sold, and food trucks or outside vendors will not be allowed. All concession stand workers will wear facemasks and gloves at all times.

There will be a separate area for visiting fans concessions.

Football Half-time

Half-time has been shortened to 12 minutes.

District-wide, are encouraged to stay on the field or social distance in locker room at a reduced capacity.

Post-Game

District-wide, no one will be allowed on the field post-game. Parents and fans need to exit the stadium immediately following the conclusion of the game. Football athletes will be released from the locker room on Gary Theiler Way.

Press Box / Media

District-wide, essential personnel will only be allowed in the press box.

Press personnel will be restricted to the field, from the 10-yard line to the back of the endzone. They may not switch sides while students are in the pathway.

Pre-game Meals

District-wide, team pre-game meals will either need to be pre-packaged, or if buffet style, served by adults with facemasks and gloves. Social distancing must occur during meal times when facemasks are off.

Visiting team

The visiting team will pre-screen their athletes prior to arrival. District-wide, visiting team can use locker room if it set up in advance, and uses it in pods so social distancing can occur. Visiting team will need to bring own coolers for water- but can filled at Manatee upon arrival. Our home athletic trainer will only be available for emergencies- the visiting team may bring their own athletic trainer. Visiting team should tape prior to arrival.

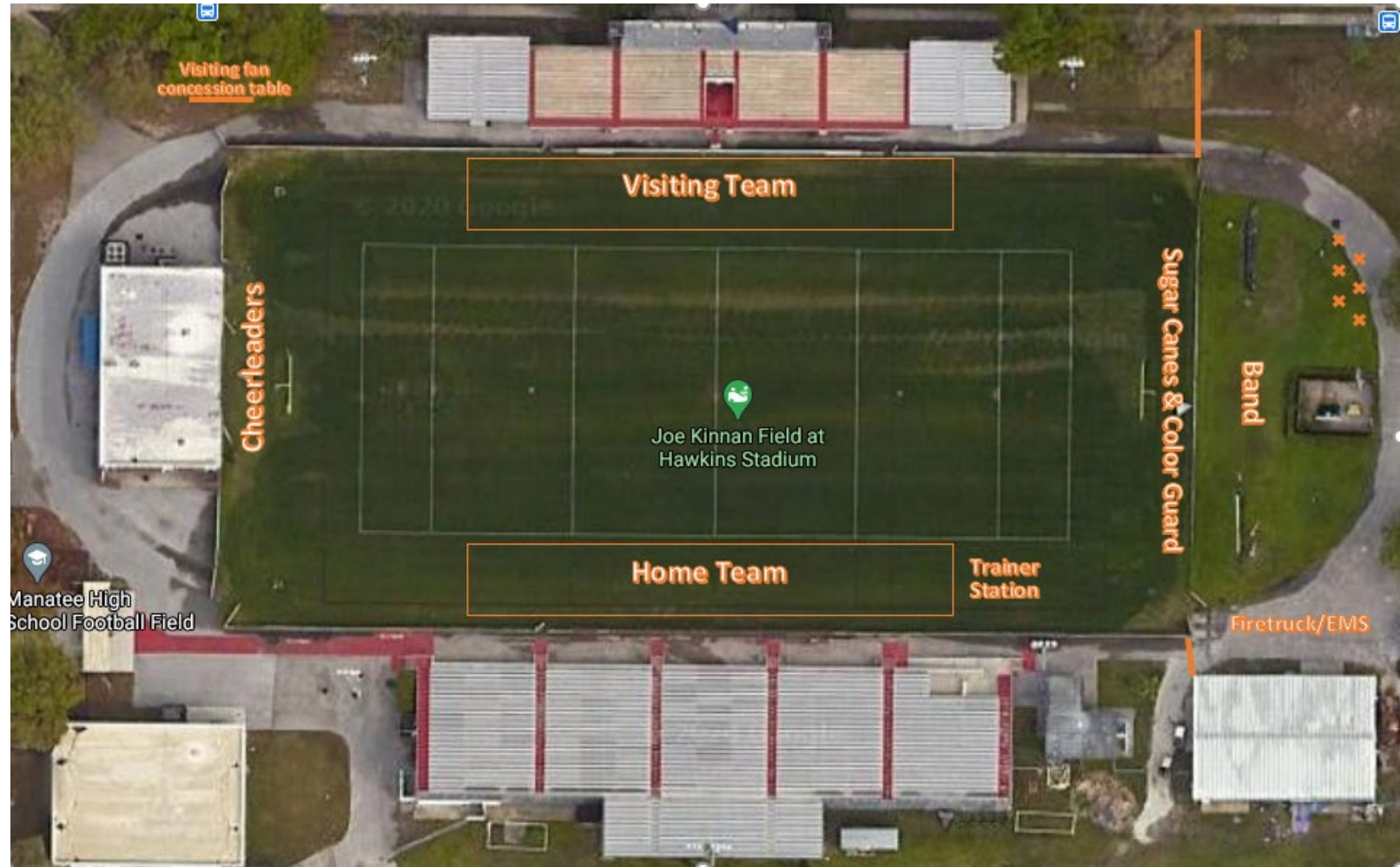
Officials

District-wide, officials will wear facemasks when entering and exiting stadium, but will be optional during the game. Upon arrival officials will have their temperature taken and complete a questionnaire. All games will have five-man official crews. Officials need to come ready to go- no private changing area will be provided. Officials will also arrive with their own marked large water bottle.

Fan parking and entrance/exit map



Game day field layout



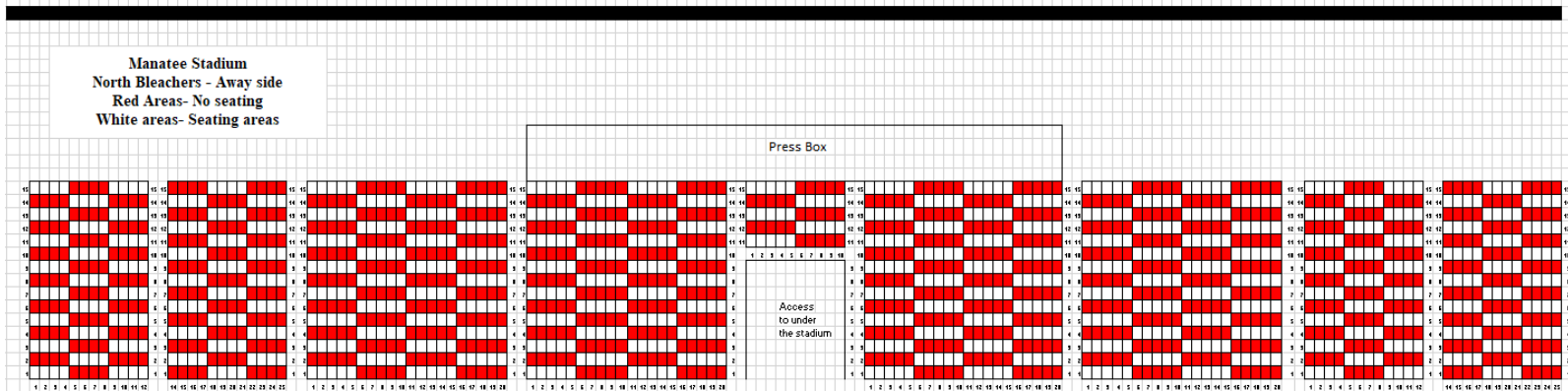
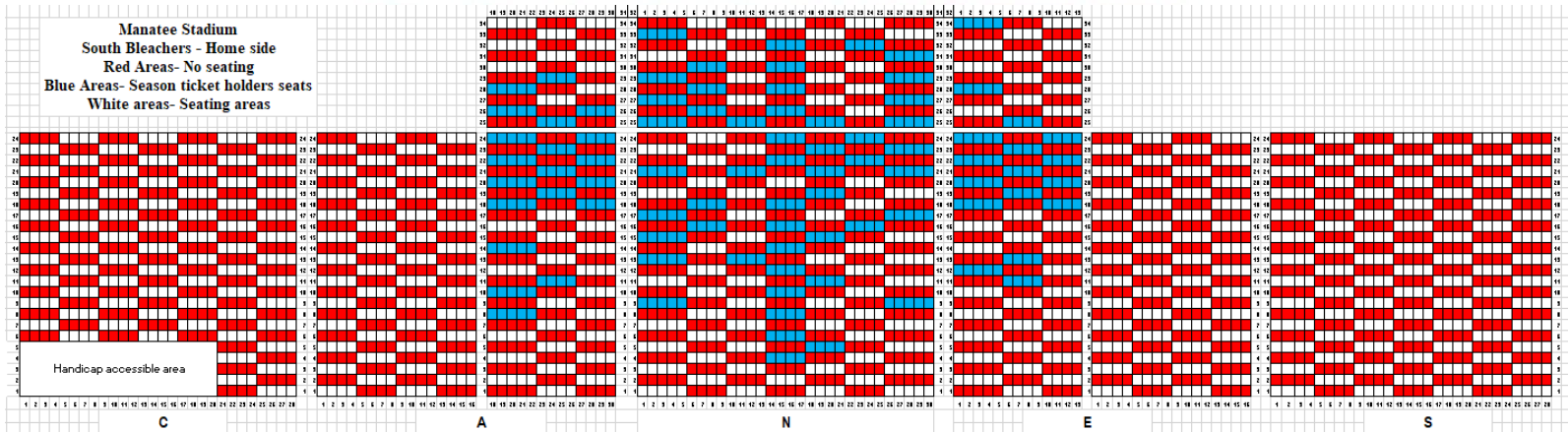
Manatee

Manatee Stadium seating- Home and away sides

Red areas- No seating

Blue areas- Reserved tickets

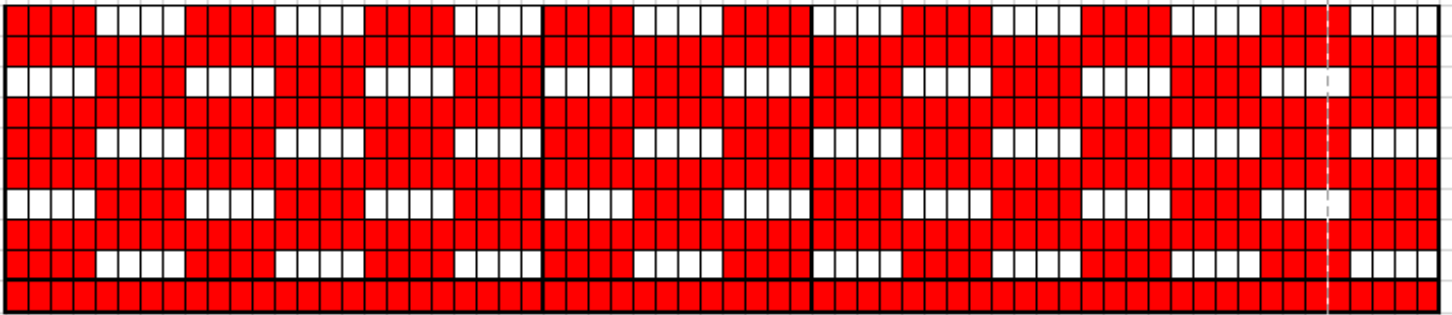
White areas- Available seating



Hurricanes

Manatee North gym seating

**Manatee North Gym
East Bleachers - Home side
Red Areas- No seating
White areas- Seating areas**



**Manatee North Gym
West Bleachers - Away side
Red Areas- No seating
White areas- Seating areas**

