



PALM VIEW K-8

September 15, 2022

Title I Annual Parent Meeting 2022-2023



"Education is the key to opportunity in our society, and the equality of educational opportunity must be the birthright of every citizen."

Lyndon B. Johnson



Agenda

9/15/2022

Welcome and Introductions

- All About Title I
- Parent/Guardian Rights
- Standards and Assessments
- Parental Involvement
 - SAC meetings
 - Volunteering
 - Homework help
 - Attendance

PLEASE SIGN IN





Title I, Part A



What is Title I?

Title I is a federally funded entitlement program that provides supplemental resources to higher poverty schools.

These resources are intended to:

- Promote high academic achievement for all children
- Improve teaching and learning
- Increase parent and family engagement



Title I Funding



Federal

- Federal Title I funds flow through states

State
(SEA)

- Florida Department of Education gives funds to Florida school districts

Local
(LEA)

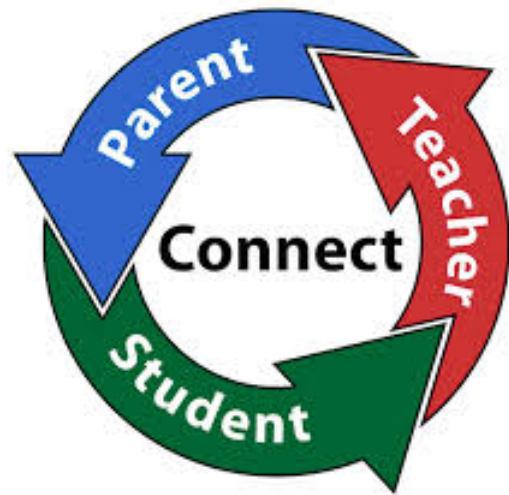
- SDMC gives funds to eligible Title I schools in the district

75%



Title I

Funds are used to support:



Title I Programs Provide Supplemental Support to Students, Teachers, and Families!

- Additional teachers & para-professionals to support small group instruction
- Additional support staff: Graduation Enhancement Technicians (GETs)
- Extra time for instruction (before, after, and/or summer school programs) - Tutoring; Enrichment
- A variety of supplemental teaching materials and supplies
- Technology (hardware and software)
- Reading & Math Coaches and additional training opportunities to provide on-going professional development to school staff
- Parental involvement activities, resources, and communications



Parent/Guardian Right to Know

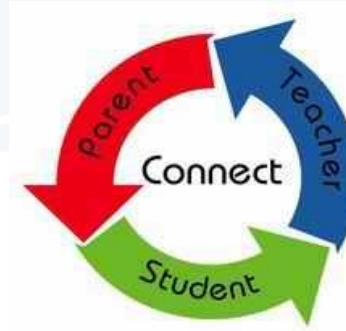
- To be involved and request regular meetings to express your opinions and concerns;
- To be provided information on your child's level of achievement on assessments;
- To request and receive information on the qualifications of your child's teachers and paraprofessionals;
- To be informed if your child is taught by a non-state certified teacher for four or more consecutive weeks.





Home-School Compact

*signed by all families

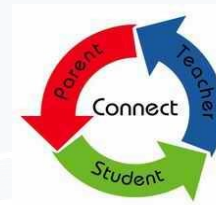


- The entire school staff, parents, and students will share the responsibility for improved student academic achievement!

**WORKING
TOGETHER**

A stylized illustration of two figures, one green and one purple, climbing a large yellow letter 'W' that is part of the word 'WORKING'. The green figure is on the left side of the 'W', and the purple figure is on the right side of the 'W'.

Home-School Compact



Palm View K-8 School SCHOOL-PARENT COMPACT (AGREEMENT) 2022-2023



Welcome to the 2022-2023 school year! Please read the information below, sign, and return it to your student's Homeroom teacher. Great things happen when parents and school staff are partners in education and strong systems of support can be created for all our students. We need your help to make this school year a success!

Parents/Guardians will support the achievement of their student in the following ways:

- ✓ Ensure that your student attends school every day, on time, and ready to learn.
- ✓ Stay informed about your student's learning, attendance, and behavior using the Focus Parent Portal. (<https://www.manateeschools.net/focus>)
- ✓ Set high expectations for learning and behavior:
 - Communicate with your student's teacher(s).
 - Review the SDMC Student Code of Conduct. (<https://www.manateeschools.net/policy>)
 - Encourage your student to read every night.
 - Monitor and make sure your student is completing his/her classwork and homework.
 - Check your student's agenda daily for teacher notes, assignments, progress reports, and school notices.
 - Reinforce appropriate behavior in the classroom and monthly character traits and good citizenship.
 - Inform teacher(s) of any problems outside of school that could affect your student's behavior or learning.

We encourage every parent/guardian to support our school in the following ways:

- ✓ Stay up to date with school and district information on our website: <https://www.manateeschools.net/palmview>
- ✓ Complete the annual needs assessment (Parent Survey) for our school. Join the School Advisory Council (SAC) and provide feedback on school improvement initiatives. Attend informational meetings such as the Title I and ESOL parent meetings.
- ✓ Participate in family involvement nights and provide feedback about what kinds of events interest you. (Ex. *Back to School/Open House, Trunk or Treat, Literacy Night, WOZ/STEAM Events, Winter Arts Performances, etc.*)
- ✓ Volunteer on campus and during field trips.
- ✓ Help with fundraisers and classroom activities.

The faculty and staff of Palm View K-8 will work to ensure that the following are provided to support learning:

- ✓ A caring, supportive, inclusive, safe and stimulating learning environment.
- ✓ Highly qualified teachers who utilize highly effective, research-based teaching strategies.
- ✓ High-quality district curriculum and materials based on Florida's academic achievement standards.
- ✓ Assessments that allow teachers to monitor progress and adjust instruction based on student needs.
- ✓ Notification of the academic progress and needs of your child as well as ongoing communication about homework, learning, and behavior.
- ✓ Rich reading and math instruction enhanced by intervention and enrichment programs.
- ✓ After school enrichment and academic support programs.
- ✓ Timely notice of family events, parent workshops, meetings and training sessions.

Palm View K-8 School Commitment to Support our 2022-23 School-Parent Compact

Student's Signature

Parent's Signature

Student's Name and Grade Level

The Compact was shared on the following date: _____
Teacher's Name & Signature

<https://www.manateeschools.net/Page/11647>



Working together!

Title I requires that the school and families work together.

We need and want your input!

- School-level Parent and Family Engagement Plan (PFEP)
- Home-School Compact
- Schoolwide Improvement Plan and Budget
- District Title I Plan

A few ways to participate...




- Attend our parent & family activities & meetings
- Complete school and district parent surveys
- Attend School Advisory Committee (SAC) and/or Parent Teacher Organization (PTO) meetings.
- Volunteer for your child's classroom
- Help support your child at home



Calendar of Events



Palm View K-8 Calendar for September 2022

MONDAY	TUESDAY	WEDNESDAY	THURSDAY	FRIDAY	SATURDAY
			1 EDEP-Panther Care	2 EDEP-Panther Care	3
5  SCHOOL CLOSED	6 EDEP-Panther Care FAST ELA Testing Grades 3-8	7 EDEP-Panther Care	8 EDEP-Panther Care	9 EDEP-Panther Care	10
12 EDEP-Panther Care	13 EDEP-Panther Care FAST Math Testing Grades 3-8	14 EDEP-Panther Care	15 EDEP-Panther Care SAC/Title I Annual Parent Meeting 6:00 pm	16 EDEP-Panther Care	17
19 EDEP-Panther Care	20 EDEP-Panther Care	21 EDEP-Panther Care Dads with Donuts 7:00 am	22 EDEP-Panther Care	23 EDEP-Panther Care Picture Day 	24
26 EDEP-Panther Care	27 EDEP-Panther Care	28 EDEP-Panther Care	29 EDEP-Panther Care	30 EDEP-Panther Care KONA Ice Fundraiser 	

Upcoming:

Record Day- No School for Students- Oct. 7

Quarter 1 Report Cards- Oct. 12

SAC Meeting -Oct. 20

Quarter 1 Awards- Oct. 21

Trunk or Treat- Oct. 28

Kona ICE Fundraiser- Oct. 28

August:

Open House- Aug. 8th

Students first day- Aug. 10th

KG-2 FAST STAR Reading Assessment- Aug. 23rd

KG- 2 FAST STAR Math Assessment- Aug. 30th



What's Going On?

Here are some great ways to find out what is going on at our school!

- School webpage
- District webpage and/or MySDMC
- Remind/Class DoJo
- Twitter/Facebook
- Peach Jar
- PBIS Rewards
- Monthly Parent Calenc



Parent Center



Visit the Parent Center on your school's website to get TIPS, ARTICLES, and VIDEOS to help your child at school and at home!

[Home](#) | [Departments](#) | [Parent Center](#) | [Parent Center Home](#)

PARENT CENTER

[Parent Center Home](#)

[Parent Resources](#)

[Digital Resources](#)

Elementary

Today's Tip for Parents:
**High Expectations
Raise Achievement**

(click here to see tip)

**School Success Ideas
for Parents**

- Idea of the Day
- Weekly Quiz
- Timely Topics
- Ask the Experts
- School Success Library

Consejo del día:
**Las expectativas
altas aumentan
el rendimiento**

(haga clic para ver el consejo)

Ideas para el éxito escolar

- Idea del día
- Temas de actualidad
- Cuestionario semanal
- Pregunte a los expertos
- Biblioteca para el éxito escolar

Secondary

Today's Tip for Parents:
**Offer Your Expertise
On Your Teen**

(click here to see tip)

**School Success Ideas
for Parents**

- Idea of the Day
- Weekly Quiz
- Timely Topics
- Ask the Experts
- School Success Library

Consejo del día:
**Ofrezca su ayuda
como el mejor experto
en su joven**

(haga clic para ver el consejo)

Ideas para el éxito escolar

- Idea del día
- Temas de actualidad
- Cuestionario semanal
- Pregunte a los expertos
- Biblioteca para el éxito escolar

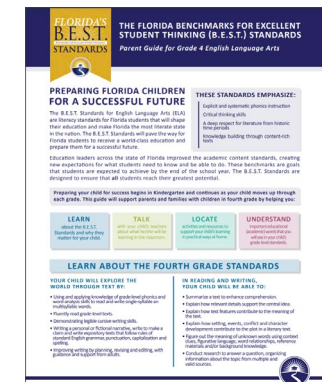
What We Teach!



- The School District of Manatee County teaches to the Florida Standards. The B.E.S.T. standards will continue to be rolled out this year!
- The standards reflect what all students should know and be able to do in each grade from Kindergarten through 12th grade.

Attention K-8 Parents!!!

Look for your copy of the Parent Guide for ELA B.E.S.T. Standards



Ask us or visit the www.FLDOE.org website or your school for more information.



B.E.S.T. Standards Implementation Timeline


Florida's TRANSITION TIMELINE

	2020-2021	2021-2022	2022-2023
PROFESSIONAL DEVELOPMENT	Begins for ELA and Math	Continues for ELA and Math	Continues for ELA and Math
STANDARDS	Current ELA and Math	New K-2 ELA Current 3-12 ELA Current K-12 Math	New ELA and Math
INSTRUCTIONAL MATERIALS ADOPTION PROCESS	K-12 ELA	K-12 Math	K-12 Social Studies
CURRICULUM IMPLEMENTATION	Current ELA and Math *	New K-2 ELA Current 3-12 ELA * Current K-12 Math *	New ELA and Math
STATEWIDE ASSESSMENTS	Current ELA and Math	Current ELA and Math	New ELA and Math

* Recommended since current statewide assessments still in place, but this is a district decision.

What your child needs to know and be able to do...



Where Educators Go For Bright Ideas

NOT A MEMBER YET?
SIGN UP

SIGN IN

HELP

HOME
Of CPALMS

STANDARDS
Info. & Resources

COURSE
Descriptions & Directory

RESOURCES
Vetted By Peers & Experts

PD PROGRAMS
Self-Paced Training

ABOUT CPALMS
Initiatives & Partnerships

ICPALMS
Florida's Platform

StandardsAccess PointsPrint/Export StandardsComputer Science StandardsCoding SchemeContent Complexity Rating

Math Modeling StandardsAssessmentsB.E.S.T. StandardsStandards Viewer AppAPI

Related Tips/Tutorials

B.E.S.T. Standards

Click on the buttons below to download a PDF version of the new Florida's B.E.S.T. standards for Mathematics and English Language Arts.

English Language Arts
(PDF)

Effective 2021-22 for Grades K-2
and 2022-23 for Grades 3-12

Mathematics (PDF)

Effective 2022-23 for Grades K-
12



Need help understanding the standards?



- CPalms offers tutorials for many of the standards.
- Visit the www.cpalms.org Home Page and choose the “I am a Florida Parent” tile to find thousands of videos, resources, and tutorials to support your student.

come to CPALMS

one of the options to get started:



Florida Parents & Caregivers

Changes so that all Florida parents have access to all teaching resources without needing an account to help through this testing phase. Click on the tabs below to explore some of the resources we offer to Florida parents and caregivers.

Original Student Tutorials
Interactive online lessons

Interactive Videos
Short STEM videos

Student Resources
Curated resources

Original Student Tutorials

Our most popular student learning resources. Play the video below to learn how you can use and share our interactive, standard-aligned Original Student Tutorials with your child.



Access the tutorials on FloridaStudents.org | Access the tutorials on CPALMS



More support is available at FloridaStudents.org



Florida  Students
educational resources for learning

Sign In

Search

HELP

Let's get started!



English Language Arts

413 Original Tutorials
79 Other Resources



Mathematics

351 Original Tutorials
1244 Other Resources



Science

411 Original Tutorials
359 Other Resources



Social Studies

105 Original Tutorials
237 Other Resources

How We Measure Learning!



**ACCESS
for ELLs[®] 2.0**

- **New!** Florida Assessment of Student Thinking (F.A.S.T.)
- Statewide Science Assessment
(grades 5 and 8)
- End of Course Assessments (EOCs) *(for select courses in MS/HS)*
- *ACT/SAT*
- ACCESS for ELLs 2.0
- District quarterly assessments, diagnostics, and school-based assessments for progress monitoring

Ask us or visit the www.FLDOE.org website or your school for more information.



How is your child doing in school?

FIND OUT ON THE MY
SDMC FOCUS APP!

DOWNLOAD TODAY!

WE CAN HELP!

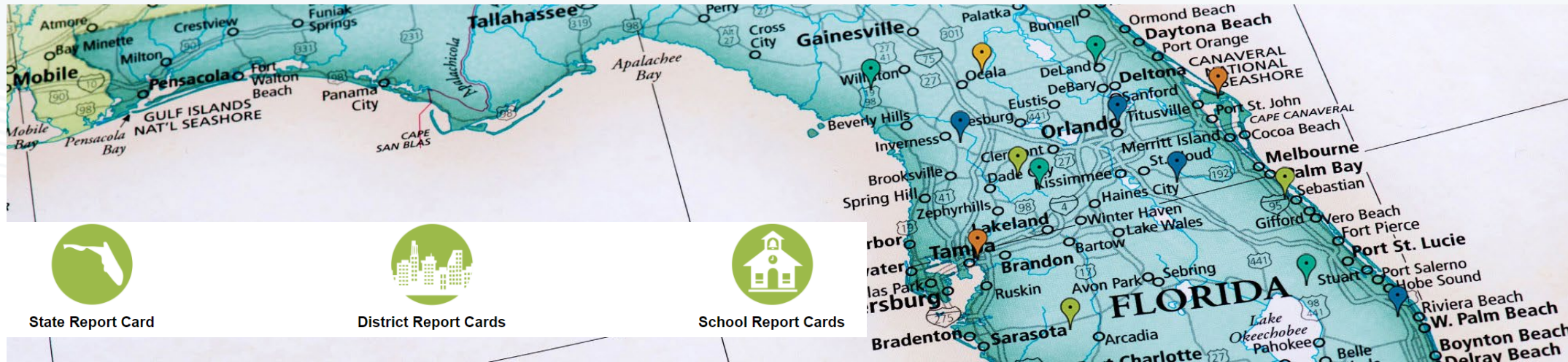
Focus at your fingertips.
Focus a tu alcance.

Download the app today!
¡Obtén la aplicación ahora!

 **MySDMC Focus**

If you have questions or concerns about your child's progress, please contact the school or your child's teacher to discuss.



WANT MORE
INFORMAITON?

Know Your Schools

The Portal provides access to **Florida report cards and reports** in a variety of formats including graphs, tables, maps, custom reports, and spreadsheets.



Visit: <https://edudata.fldoe.org>

How are we doing?



PALM VIEW K-8 SCHOOL

2021-2022 School Grade Breakdown

English Language Arts		
Achievement		
Num	Den	Points
158	538	29
BR	BS	

Mathematics (FSA, EOCs, FAA)		
Achievement		
Num	Den	Points
227	531	43
BZ	CA	

Science (NGSSS, EOC, FAA)		
Achievement		
Num	Den	Points
54	210	26
CL	CM	

Social Studies (EOCs)		
Achievement		
Num	Den	Points
60	130	46
CO	CP	

Graduation & Acceleration		
Graduation Rate		
Num	Den	Points
CT	CU	

Learning Gains		
Num	Den	Points
179	439	41
BT	BU	

Learning Gains		
Num	Den	Points
248	444	56
CB	CC	

2021-2022 School Grade:		
Points Earned:	411	C
Points Possible:	900	
% Earned:	46%	

College & Career Acceleration		
Num	Den	Points
CV	CW	

Lowest Quartile Learning Gains		
Num	Den	Points
39	112	35
BV	BW	

Lowest Quartile Learning Gains		
Num	Den	Points
69	112	62
CD	CE	

School Grade Scale		Point Range	
F	31% of Points Possible or Less	0	283
D	32% to 40% of Points Possible	284	364
C	41% to 53% of Points Possible	365	481
B	54% to 61% of Points Possible	482	553
A	62%+ of Points Possible	554	900

Middle School Acceleration		
Num	Den	Points
36	49	73
CR	CS	



Parent Engagement



In short,
when families are
engaged in learning at
home and school,
children do better and
schools get better.

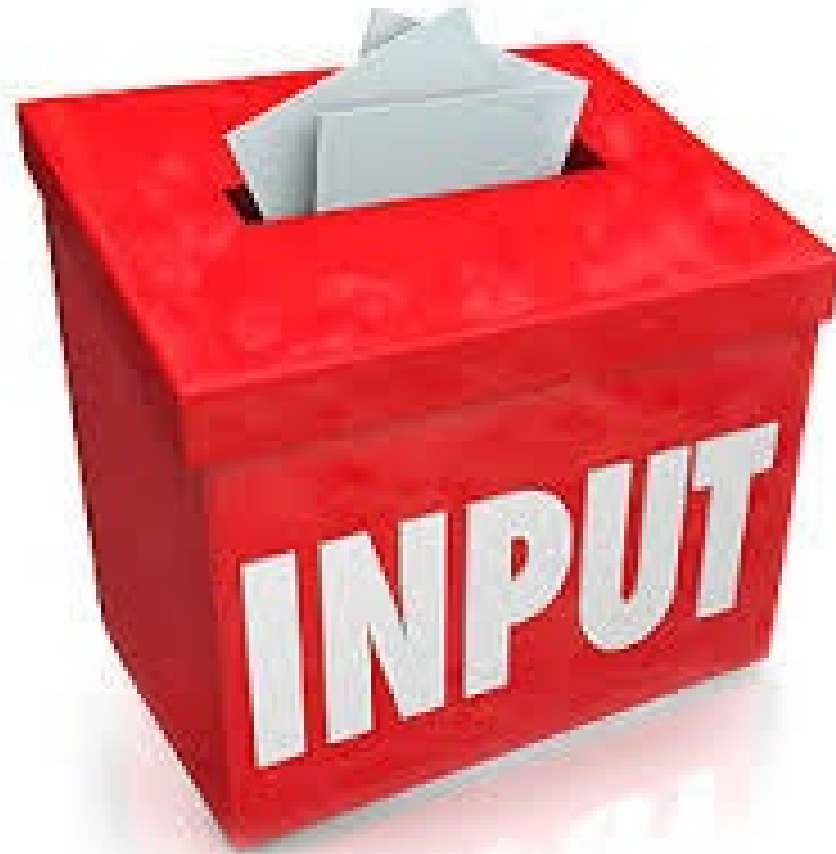
- How will you engage in your child's education this year?
- How can we help you help your child?
- How can we make our school/Title I Program better?



Questions...
Comments...
Input!



Please give
us your
feedback!



ComputerHope.com