

Braden River High School
2024 -2025 School Year
School Advisory Council (SAC)

1. Welcome (Charity Wharton, Chair)
2. Roll Call & Approval of Minutes
3. Referendum / Millage Presentation
Dr. Laurie Breslin, Executive Director
4. BRHS – BYLAW Revision / Amendment
5. Principal's Report
6. Q & A

WE
ARE 3R



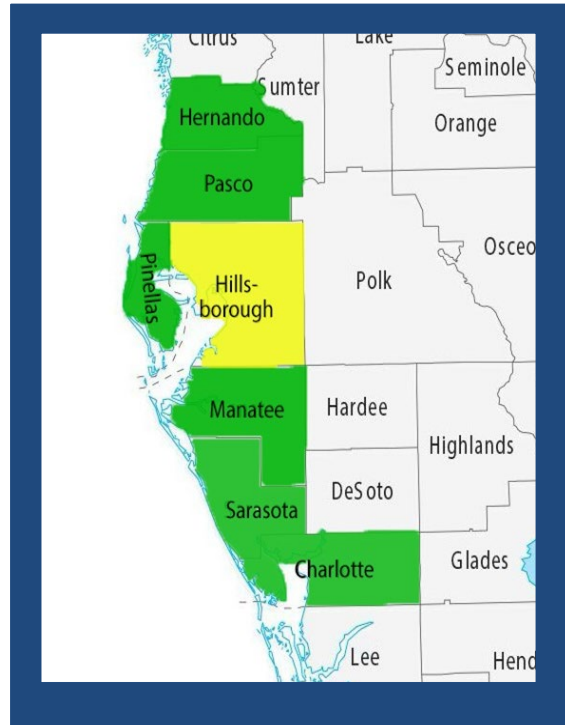


2024 RENEWAL REFERENDUM
Ballot Measure 7
INFORMATIONAL PRESENTATION

This is not a new tax.

- **Manatee County voters originally approved the additional mill in 2018.**
- **Voters renewed the 1-mill in 2021.**

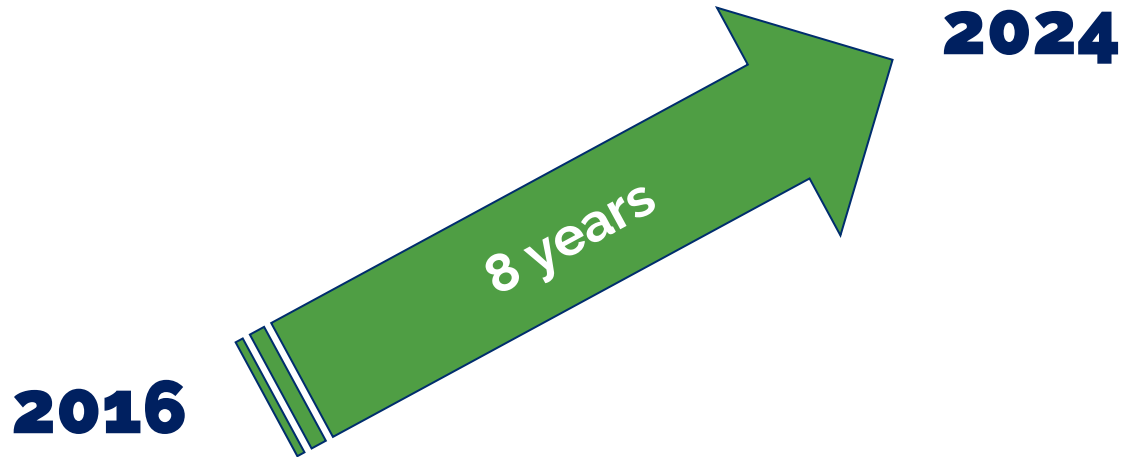
Neighboring Counties and Additional Millage



Impact of the Additional Mill



Over the past eight years, our District has risen 14 spots in the state's academic rankings based on student test scores.



2024 Student Scores Trending Up



Reading – Students improved their scores in every grade 3 through 10.

Math – Students improved their scores in every grade 3 through 7.

Writing – Student scores were among the Top 20 in the state in grades 5 through 9, and in the Top 10 in 4th grade.

Results from 2023-24

- Largest # of “A” schools since 2012
 - 20 Board-governed schools
 - 4 Charter schools
- Title 1 schools charting a new course
 - Abel Elementary earns first “A” since 2011
 - Tillman Elementary earns first “A” in school history
 - Ballard Elementary improves from “D” to “B”
- Parrish Community High earns first “A”



Retaining and Recruiting Teachers

Annual Millage Supplements to Teachers



2018-19 \$4,008

2020-21 \$5,202

2022-23 \$6,591

2023-24 \$8,362

Starting Teacher Pay in Manatee County



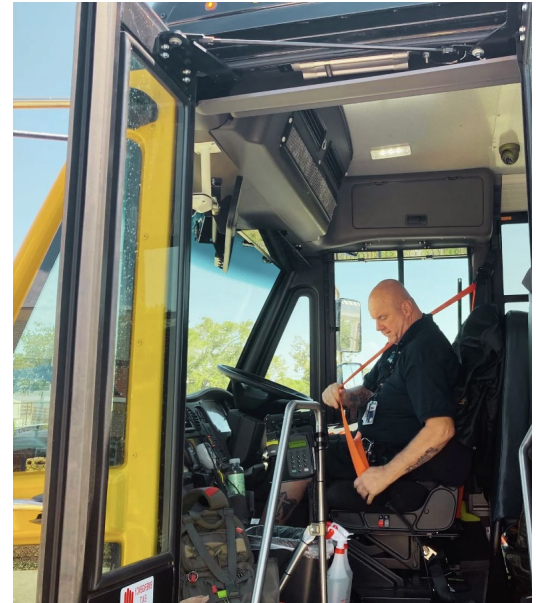
2018-19 \$44,407

2020-21 \$51,640

2022-23 \$55,177

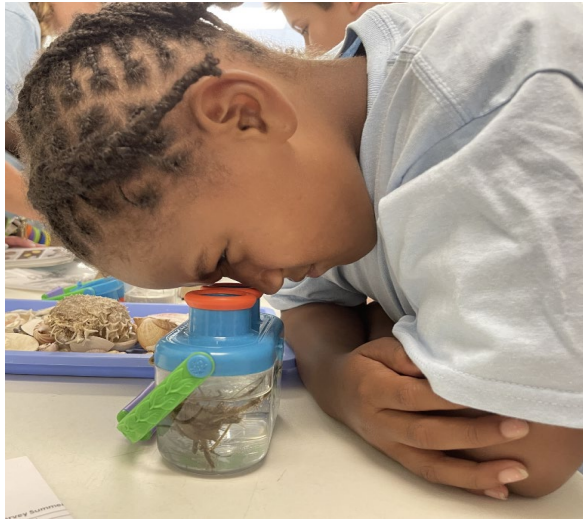
2023-24 \$57,572

Retaining and Recruiting Other Employees who Work Directly with Students



District Successes Aided by the Additional Mill

Emphasizing STEM in
Every Elementary School



Dominating the
State TSA Competition



District Successes Aided by the Additional Mill

Earning 'District of the Year' Status



Making it to Carnegie Hall



Priorities Moving Forward

Increasing Security for Students and Schools



Recruiting and Retaining Teachers and Staff



Boosting success with More Instructional Time



Offering Real-World Workforce Education



Priorities Moving Forward



Expanding Early Literacy Programs



Adding Options for Science Technology Engineering and Math



Enhancing Arts and Athletics



Supporting Charter Schools

FUNDS COLLECTED BY THE MILL ARE SPENT IN MANATEE COUNTY ON MANATEE DISTRICT STUDENTS, TEACHERS AND SCHOOLS



Cost, Transparency and Oversight

The Cost

To Homeowners

Cost: Millage is used to calculate local property taxes. One mill is worth \$1 for every \$1,000 of assessed value. For a home worth \$400,000, one mill would equal \$400 a year or \$33 a month (less homestead exemption).

Transparency: Detailed graphics and information demonstrating the budgeting and allocation of funds for each school year of the additional mill is available at:

www.manateeschools.net/referendum

Community Access to

Annual Data

Citizens Provide

OVERSIGHT

Oversight: Since 2018, an independent citizens oversight committee has overseen fiscal stewardship of the funds. To view reports, meeting agendas and minutes of those meetings visit: www.manateeschools.net/referendum

Ballot Measure 7

CONTINUED FUNDING FOR STUDENT ACHIEVEMENT THROUGH RENEWAL OF AD VALOREM MILLAGE REFERENDUM

Shall the School Board of Manatee County continue the current 1 mill ad valorem millage from July 1, 2025, through June 30, 2029, for: school safety and security; recruiting and retaining teachers and staff; student achievement through more instructional time and supports; early literacy programs; career and technical education; STEM, visual and performing arts, athletics; and public charter schools; with oversight by an independent citizen committee to ensure proper use of funds?

YES, for continuation

NO, against continuation

Key General Election Dates

Voters to Decide on Renewal of 1 Mill

Deadline to register:

OCT. 7

Deadline to request
mail-in ballot:

OCT. 24

Early voting:

OCT. 21 - Nov. 2

Deadline to return
mail-in ballot:

before 7 p.m.

Nov. 5, 2024



Polls open at 7 a.m.
Polls close at 7 p.m.

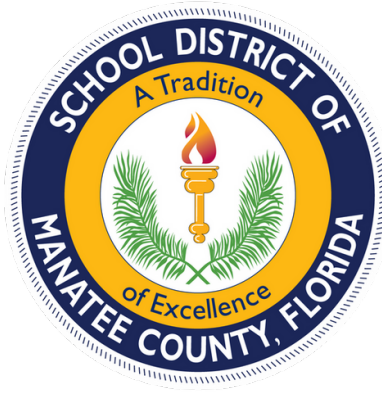
Ballot Measure 7

Vote by Mail ballots must be received by 7 p.m.

Election Day



For more information, please visit:
www.manateeschools.net/referendum



2024 RENEWAL REFERENDUM

QUESTIONS?